

CAPACITY



NORRA LATIN

Room	Theatre	School seating	U-tables	Island	Round tables	Misc
<i>Aulan</i>	450	196	62	202	240	-
<i>Pelarsalen</i>	300	144	60	120	220	-
<i>Musikrummet</i>	117	80	38	60	80	-
<i>Category 3</i>	63	30	24	30	-	-
<i>Category 2</i>	36	24	16	18	-	-
<i>Styrelserummet</i>	-	-	14	-	-	-
<i>Streaming studio</i>	-	-	-	-	-	5

Exhibition areas floor 1: Marmorvalvet 12 seats

Exhibition areas floor 2: 4 pcs (5-6 sqm) + Södra Ljuskgården (77 sqm)

Exhibition areas floor 3: 11 pcs (4-6 sqm)

Exhibition areas floor 4: 11 pcs (4-6 sqm)

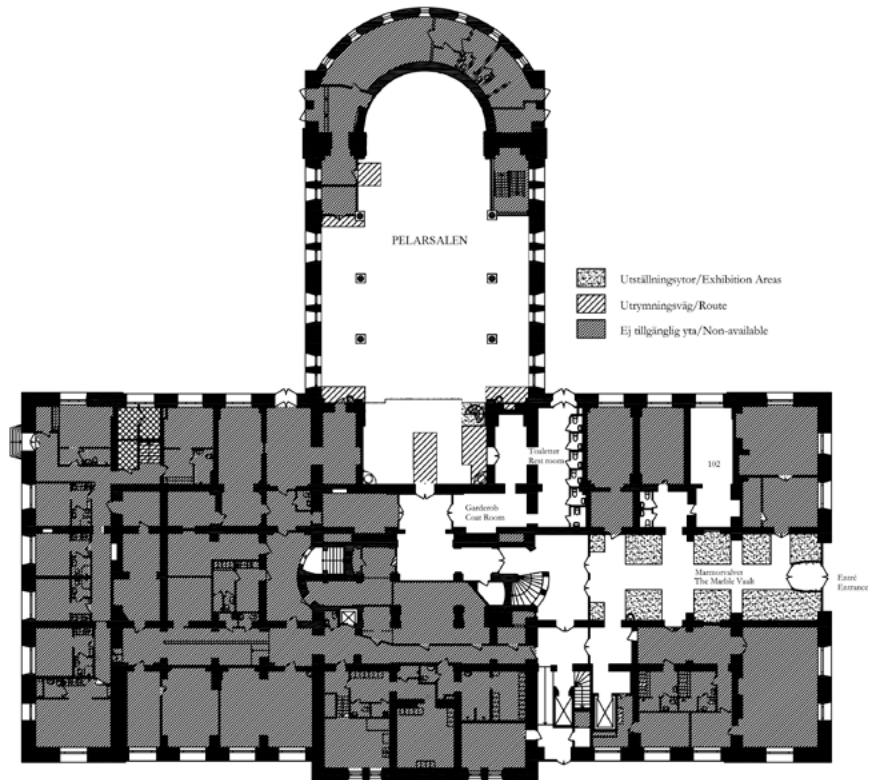
	Projector	Movie screen	Wide screen TV 77"	Microphones 3 / 1 wireless	Microphones 3 / 2 wireless	Stage lights Standard	Registering desk	AV-technician	Hearing loop	Whiteboard	Large note pad	Note pads & pens
<i>Pelarsalen (*)</i>	●	●		●		●	●	●	●			
<i>Aulan</i>	●	●		●		●	●	●	●			
<i>Musiksalen (456)</i>	●	●			●		●		●		●	●
<i>Room category 3 (253, 353, 357, 359, 361, 451, 453, 461)</i>	●	●								●	●	●
<i>Room category 2 (251, 252, 254, 352, 354, 355, 356, 358, 360, 362, 454, 458, 459)</i>		●								●	●	●
<i>Room 255, 462, 463</i>	●	●								●	●	●
<i>Room 452 Styrelserum</i>			●								●	●
<i>Room 460 Styrelserum</i>			●								●	●

* Other conditions apply to exhibitions and parties in the Pelarsalen. Please contact us for more information.

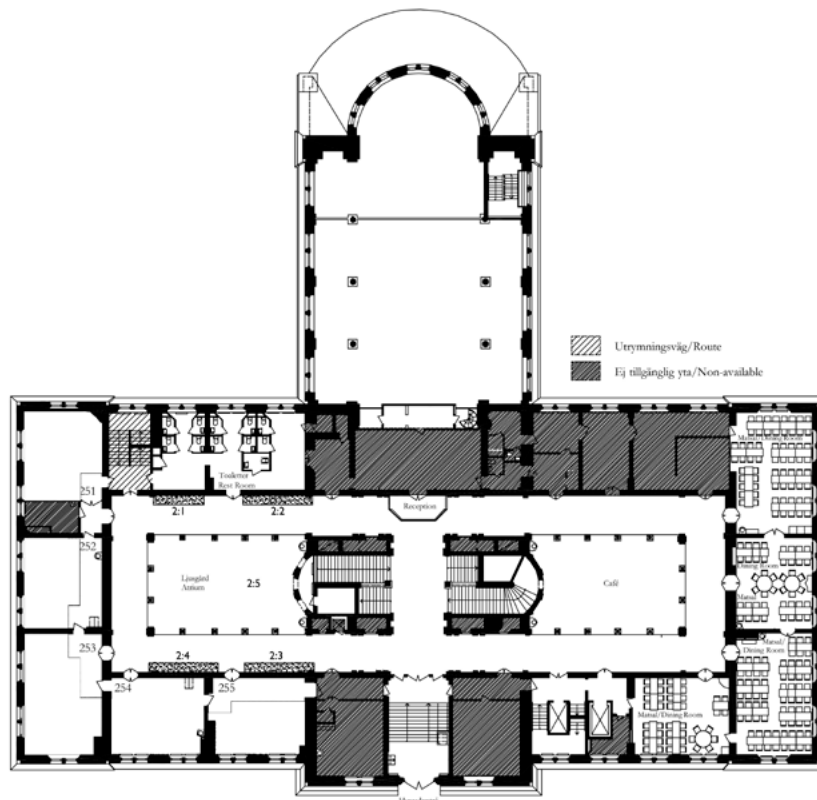
BLUEPRINTS NORRA LATIN



FLOOR 1



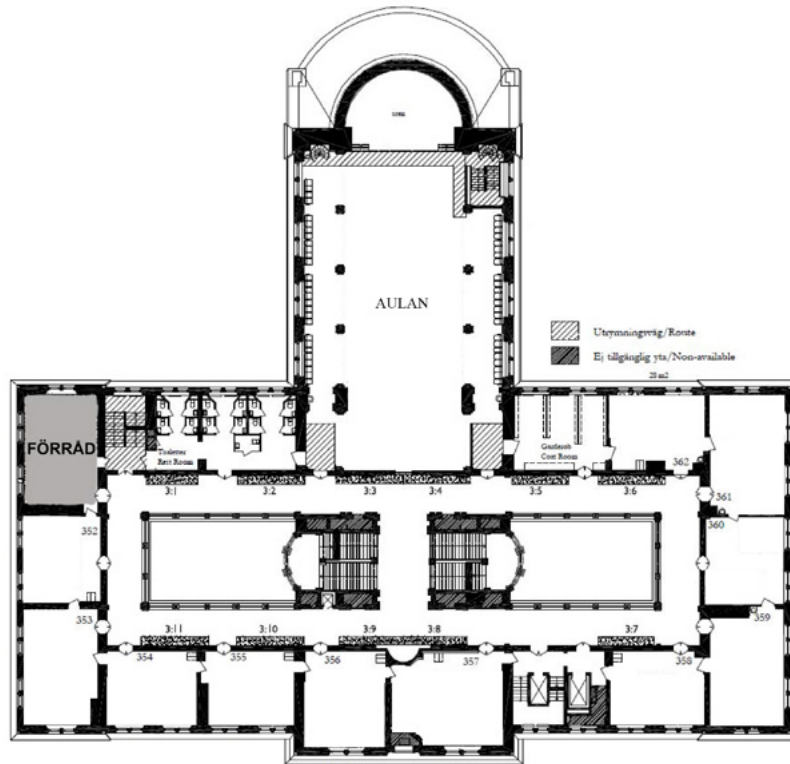
FLOOR 2



BLUEPRINTS NORRA LATIN



FLOOR 3



FLOOR 4

